

SOCIAL GOOD

# NEWSLETTER



## **SPHCB and NFTI Partners to Recruit and Train 23 Local Technical Assistants on HRH Biometric System**

As part of the pilot phase, 23 Centers of Excellence—one facility per local government—have been selected for the implementation of the HRH Biometric System. To ensure the success of this initiative, NFTI recruited and trained Local Technical Assistants (LTAs) who will manage, enroll, and maintain biometric data across the designated facilities. The facility assessment training focused on five critical domains: electricity, connectivity, infrastructure, biometric placement, and data management, ensuring the readiness of each facility for the new system.

**[Read more on our website](http://www.natviewfoundation.org)**  
**[www.natviewfoundation.org](http://www.natviewfoundation.org)**

## **NFTI Holds Bi-Monthly Briefing Cadence on Longitudinal Study with Makarfi PHF OICs**



NFTI conducted a bi-monthly briefing cadence with the Makarfi Local Government Primary Health Care (PHC) facility managers on the ongoing NFTI Longitudinal Study on Primary Healthcare Facility Readiness.

A key focus of the meeting was engaging with the Officers in Charge (OICs) of the PHFs to understand their perspectives, familiarize them with the study's assessment structure, and demonstrate how data is validated at the newly renovated Situation Room at the Shehu Idris School, a facility upgraded by NFTI to facilitate real-time data analysis.

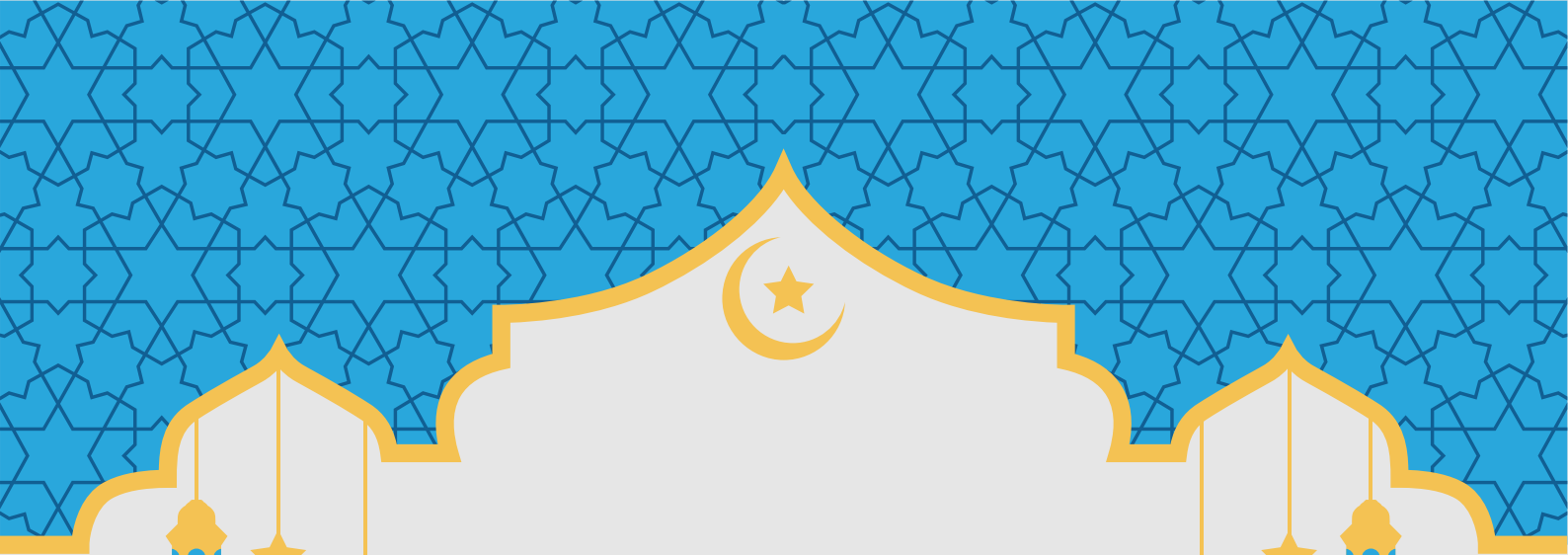


**The first time I ever encountered the concept of data collection was during the national census when I was much younger. I remember watching enumerators go from house to house, asking questions and marking tallies on their sheets. Even then, I was intrigued. I wondered how accurate it could be—how they ensured everyone was counted, avoided duplication, and if the census and its outcomes ever mattered. That curiosity has never left me, and today, working with the Natview Foundation for Technology Innovation (NFTI) on the longitudinal study project on primary healthcare facility readiness has deepened my appreciation for data-driven decision-making in ways I never imagined.**

**At NFTI, we believe in community-driven solutions, and evidence-based change is at the heart of what we do. The longitudinal study we conduct across multiple LGAs in Kaduna State helps us understand trends at Primary Healthcare Facilities, make sense of them, and ensure that every insight is validated and used.**

**One of the most fascinating aspects of this study is how quickly data is being validated. Once the data collectors, best known to us as data champions, return from the field, they don't just submit their findings and move on. Instead, we convene in the situation room, where the real work begins. The biweekly cadence meetings and peer learning sessions serve as critical touchpoints. Here, we analyze the data, identify inconsistencies, and engage in robust discussions about what the numbers mean.**

**[Read More](#)**



*Ramadan  
Mubarak*

*From all of us at WFLA.*





## KDBS, NFTI Introduces DSFP Specialization Phase.

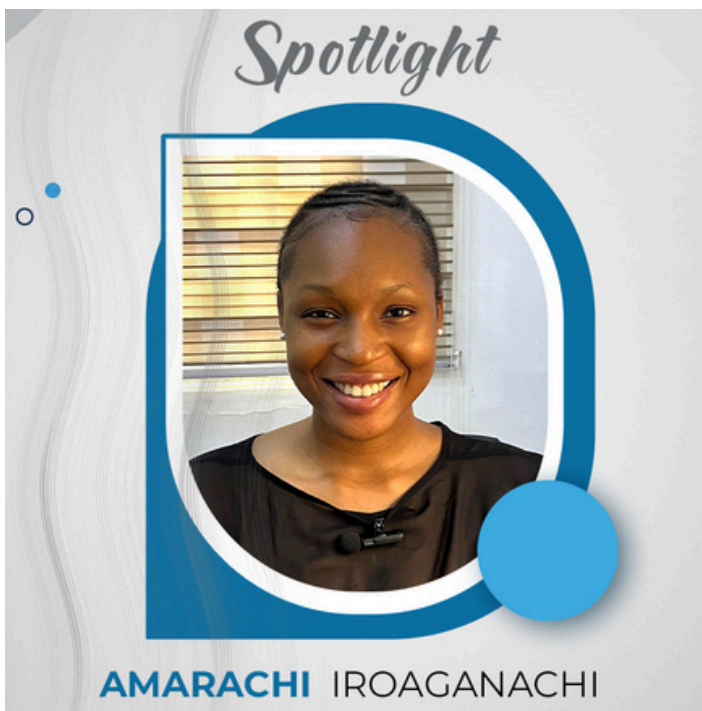
Since its inception, the Data Science Fellowship Program has consistently pushed boundaries, equipping fellows with cutting-edge data science skills and positioning them to drive evidence-based policies, solve real-world problems, and influence decision-making across key sectors of Kaduna State's economy. However, as technology advances at an unprecedented pace, coupled with the global AI domination race, foundational skills are no longer enough. The need for specialization has become imperative, and DSFP is responding with a structured approach that ensures fellows master data management skills in ways that create lasting impact.



## NFTI Spotlight

What Amarachi enjoys most about her role as a Product Designer at Natview is seeing how the products we develop are utilized, even by the most basic users. The real-world impact of these solutions fuels her passion and drives her commitment to innovation.

She envisions continued growth—for herself and Natview. “I see myself expanding my expertise and contributing to impactful projects on a larger scale. As for Natview, I see it driving even more innovative solutions and expanding its influence in the industry.”



## **NFTI Retreat 2025: Strengthening Our Commitment to the Communities We Serve.**



As an organization dedicated to harnessing data and technology for social good, our mission has always been clear: to ignite a data revolution for sustainable development across Africa. The just-concluded 2025 NFTI retreat offered a unique opportunity to take stock of our achievements in 2024, identify areas for improvement, and craft forward-thinking strategies to address emerging challenges. Through dynamic discussions, interactive workshops, and team-building exercises, we reaffirmed our shared purpose to bridge the gap between data and the real needs of the communities we serve.

One of the most significant outcomes of the retreat was the renewed emphasis on fostering interdepartmental synergy. Through the retreat, we've laid the groundwork for more cohesive and impactful project execution. Our workshops focused on streamlining operational processes, refining communication strategies, and leveraging cutting-edge technologies to maximize efficiency and effectiveness in our initiatives.

As we look to 2025, we are energized and ready to embark on a transformative journey. The insights and ideas generated during the retreat are being translated into actionable frameworks that will guide our efforts in project execution, resource allocation, and stakeholder engagement. With a reinvigorated team, we are committed to expanding our reach, scaling our impact, and driving meaningful change in the lives of those we serve.

We extend our heartfelt gratitude to everyone who contributed to the retreat's success. Your passion and dedication are the driving forces behind NFTI's progress.

**Here's to a transformative 2025 and beyond!**